

Oswal[®]



MOSFET MINI BOARD

(5200x2 + 1943x2)

ALWAYS AHEAD IN QUALITY





Oswal®

Always ahead in quality
(BT-44440X2)

Home Theater

4.1

With 7805

H . THEATOR BOARD (4.1 CH.)

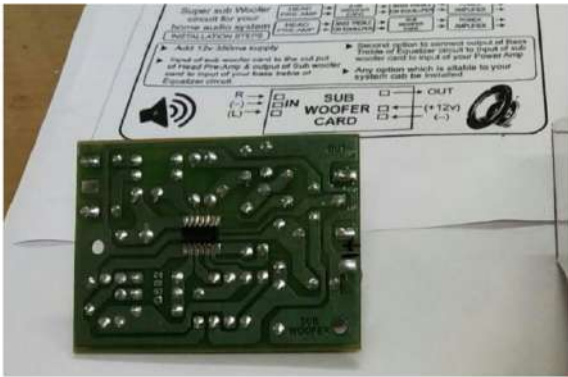


3055 USB AMPLIFIER BOARD 4TR.





SUB WOOFER BOARD





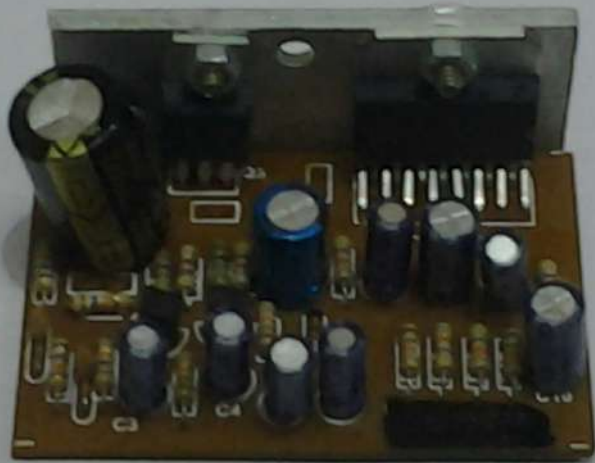
6283 BOARD



MOSFET AMPLIFIER BOARD







AUDIO BOARD 7297 IC

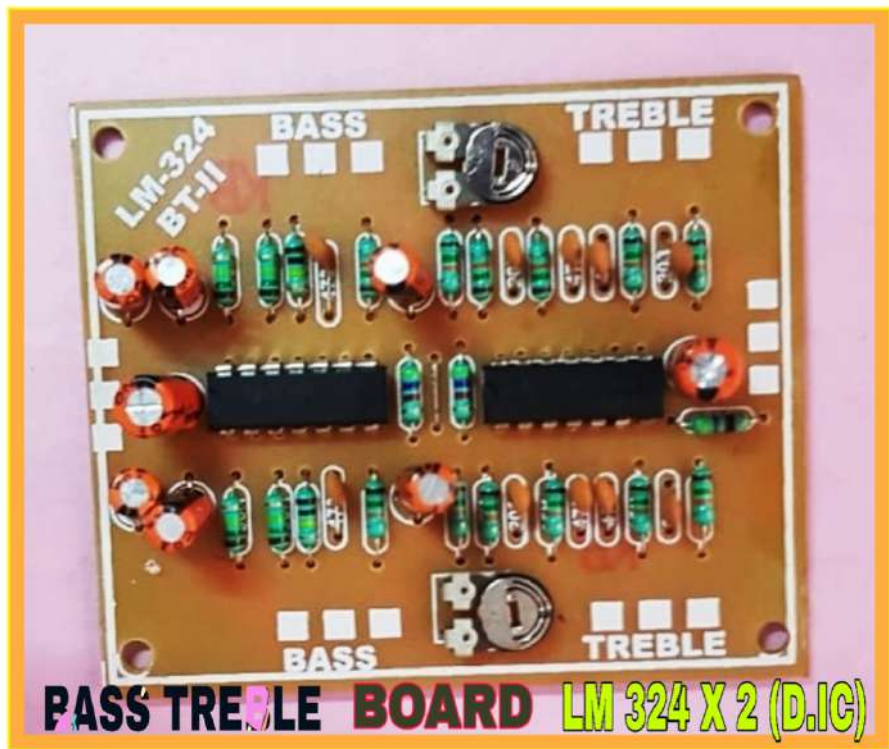


HOME THEATOR BOARD 4.1 (2050 Tr.)

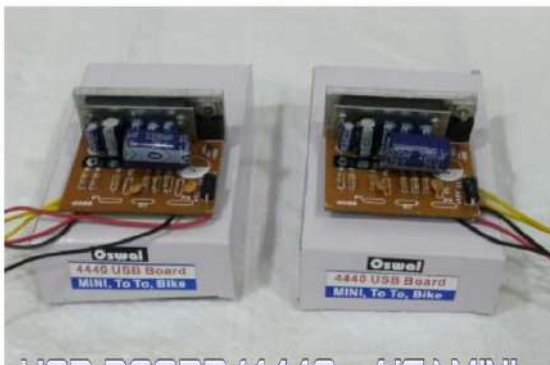


**BASS TREBLE BOARD
(IC. - LM 324)**





PASS TREBLE BOARD LM 324 X 2 (D.I.C)



USB BOARD (4440 x 1IC) MINI



Oswal™



IC 2025 AUDIO BOARD
Red Black Supply 5V DC
BLUE WIRE - SPEAKER
YELLOW WIRE - VOLUME



2025 AUDIO BOARD

(2025 X 1 IC.)

ALWAYS AHEAD IN QUALITY

OSWAL

FULL SUPPLY WITH FUSE



**STK 4141 BOARD (BIG)
STEREO AMPLIFIER CIRCUIT**

OSWAL



5.1 HOME THEATOR BOARD
2030 Tr.





**MODEL NO. 117 C (T / F BASE)
3 CFL INVERTER PCB**



NANO PCB (SMPS)

**MODEL NO. 115 C (3 LED)
3 CFL INVERTER PCB**

OSWAL

 <p>6283 BOARD (6283X1 IC.)</p>	 <p>2.1 H.T. BOARD (2030X3 IC.)</p>	 <p>2.1 H.T. BOARD 7805 (2030X3 IC. + 7805)</p>	 <p>4.1 H.T. BOARD 7805 (2030X4 IC. + 7805)</p>	 <p>4.1 H.T. BOARD 2050 (2050X4 IC. + 5V.)</p>	 <p>5.1 H.T. BOARD (2030X5 IC.)</p>	 <p>4440 MINI USB BOARD (4440X1 IC.)</p>
 <p>4440 USB B.T BOARD (4440X2 IC.)</p>	 <p>4440X2 USB B.T BOARD (4440X2 IC.) KELTRON 049</p>	 <p>4440X2 SANYO BOARD (4441X2 SANYO IC.) 1600W. WITH DUAL</p>	 <p>4440X2 CUT PCB BOARD (4440X2 IC.) WITH DUAL KELTRON</p>	 <p>7297 MINI AUDIO BOARD (7297X1 IC.)</p>	 <p>7297X2 + LM324 BOARD (7297X2 IC.) 4 SPK OUTPUT</p>	 <p>LM324 SINGLE IC. BASS TRABLE BOARD (LM324X1 IC.)</p>
 <p>LM324 DOUBLE IC. BASS TRABLE BOARD (LM324X2 IC.)</p>	 <p>SUB WOOFER BOARD (LM324X1 SMD IC.)</p>	 <p>BT JHANKAR BOARD (2 TRANSISTOR)</p>	 <p>STK 4141 SMALL BOARD (STK 4141 IC.)</p>	 <p>STK 4141 BIG BOARD (5TK 4141 IC. WITH FUSE)</p>	 <p>STK 4141 SUPPLY TRANSFORMER COIL (12V. TO 24V. 5MPS)</p>	 <p>STK 4141 SUPPLY TRANSFORMER TYPE (12V. TO 24V. 5MPS)</p>
 <p>7386 AUDIO BOARD (7386X1 IC.) 4 TRACK SOUND CIRCUIT</p>	 <p>7265 BOARD (7265X2 IC.) TOWER AUDIO CIRCUIT</p>	 <p>MOSFET SMALL BOARD (5196X2 + 1941X2)</p>	 <p>MOSFET BIG BOARD 800W (5196X2 + 1941X2) 8V.</p>	 <p>3055 USB AMPLIFIER BOARD (3055X4 TR.)</p>		

ALWAYS AHEAD IN QUALITY

OSWAL



SMPS SUPPLY (12 V TO 24 V)





MODEL NO. - DLX 77D
BASS / TREBLE BOARD
(4 TR. WITH DUAL)

BASS-TREBLE
4TR.-DLX 77D
WITH DUAL

ALWAYS AHEAD IN QUALITY



**7285 x 2 IC. BOARD
TOWER AUDIO BOARD**



OSWAL



2.1/4.1 H.T. BOARD (2030 TR.)



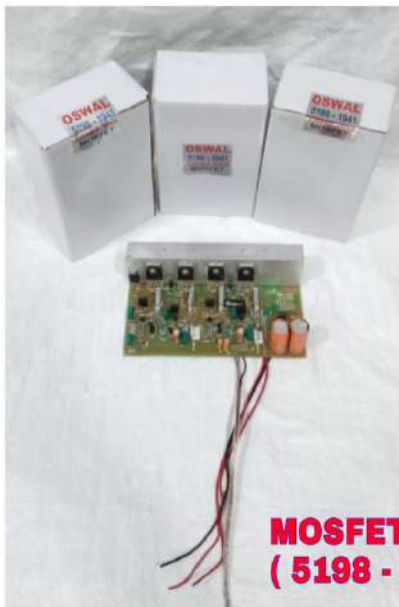
USB BT BOARD (4440x2 IC)



2.1/4.1 H.T. BOARD (2030 TR.) 7805 TR.







**MOSFET BOARD
(5198 - 1941)**





SMPS SUPPLY (12V TO 24V)

ROUND T/F



TOROIDAL T/F

